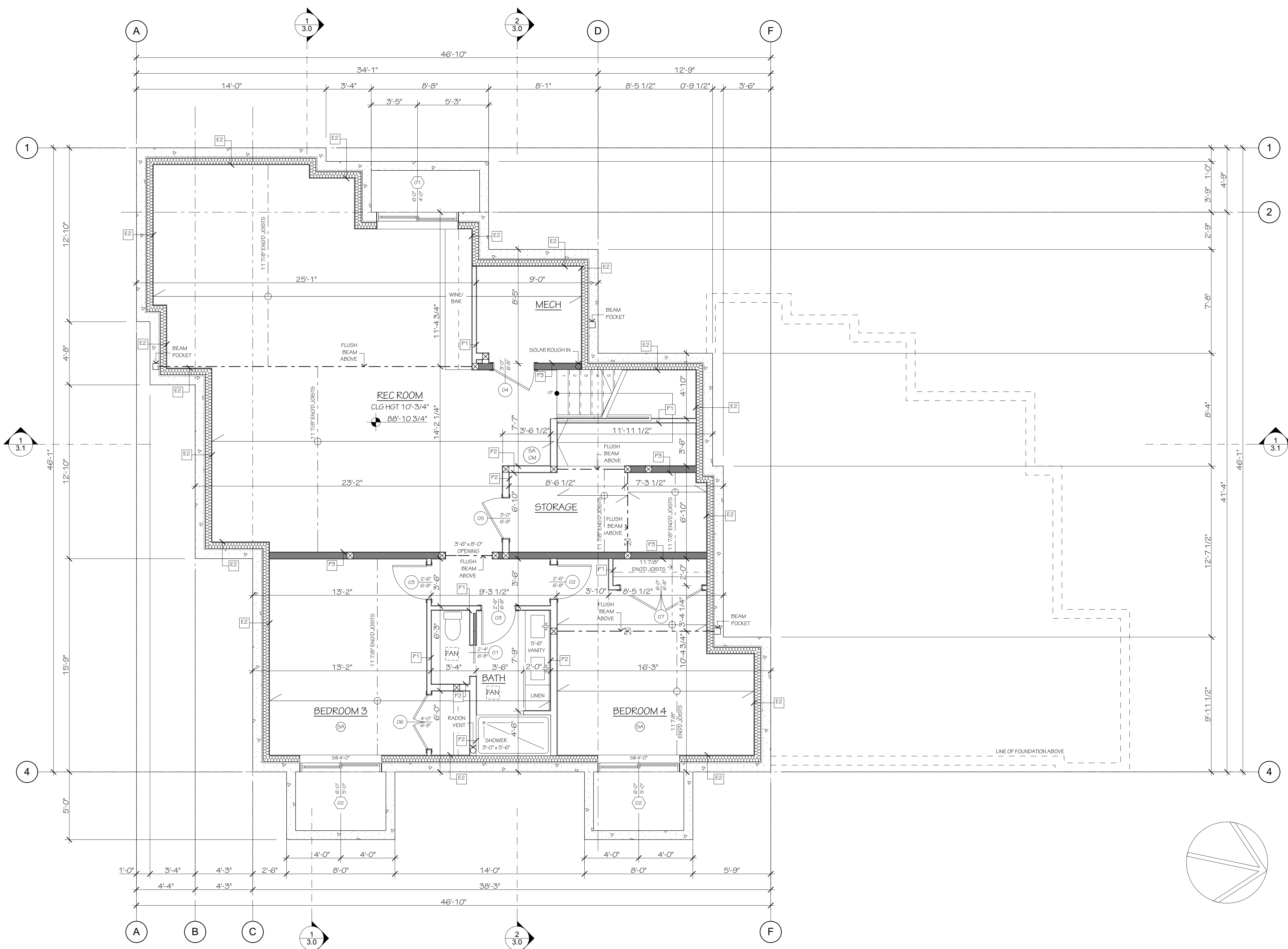


UPRISE DESIGN + DRAFTING INC.
 1685 TRAVERTINE DR., LAKE COUNTRY, BC
 PH: 778.480.0341

LOT 5 CRAWFORD POINT
RICHMOND HOMES
 DATE: DECEMBER 21, 2016
 SCALE: AS NOTED



1 BASEMENT PLAN
 SCALE: 1/4" = 1'-0"
 BASEMENT: 1583.06 SQFT

WALL ASSEMBLIES

E1	TYPICAL EXTERIOR WALL CLADDING WEATHER BARRIER 3/8" SHEATHING 2x6 STUD WALL BATT INSULATION VAPOUR/AIR BARRIER 1/2" GYPSUM BOARD
E1A	TALL EXTERIOR WALL (>11'-8") CLADDING WEATHER BARRIER 3/8" SHEATHING 2x6 STUD WALL BATT INSULATION VAPOUR/AIR BARRIER 1/2" GYPSUM BOARD
E2	FROST WALL DAMP PROOFING 9" CONCRETE WALL 1" AIR SPACE 2x6 STUD WALL BATT INSULATION VAPOUR/AIR BARRIER 1/2" GYPSUM BOARD
E3	GARAGE WALL 2x6 STUD WALL BATT INSULATION AIR/VAPOUR BARRIER 1/2" GYPSUM
E4	STONE COLUMN FEATURE VENEER STONE WEATHER BARRIER 3/8" SHEATHING 2x4 STUD WALL
P1	TYPICAL INTERIOR WALL 1/2" GYPSUM BOARD 2x4 STUD WALL 1/2" GYPSUM BOARD
P2	2X6 WALL 1/2" GYPSUM BOARD 2x6 STUD WALL 1/2" GYPSUM BOARD
P3	LOAD BEARING INTERIOR WALL 1/2" GYPSUM BOARD 2x6 STUD WALL 1/2" GYPSUM BOARD
P3A	TALL LOAD BEARING INTERIOR WALL (>11'-8") 1/2" GYPSUM BOARD 2x6 STUD WALL 1/2" GYPSUM BOARD

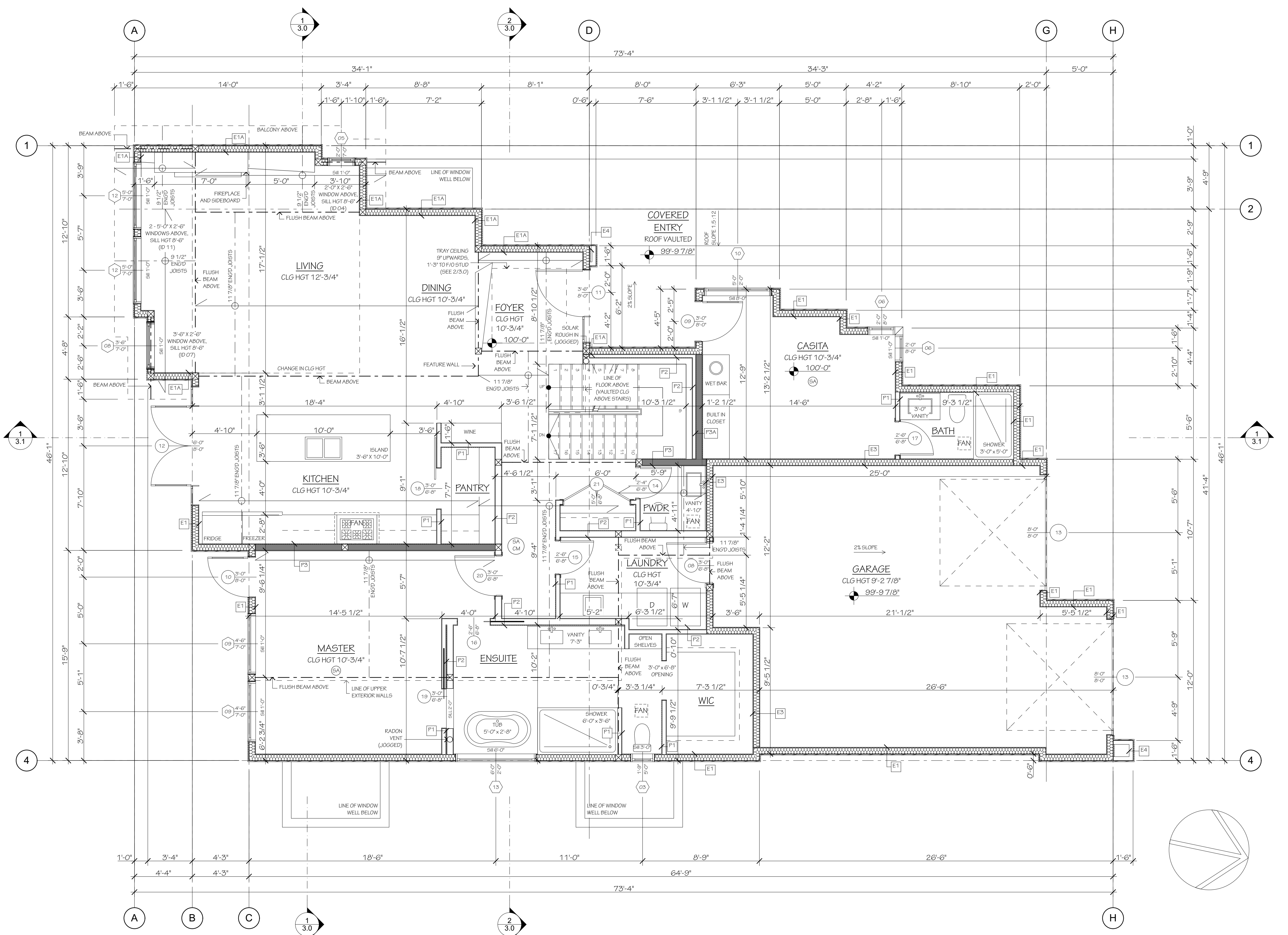
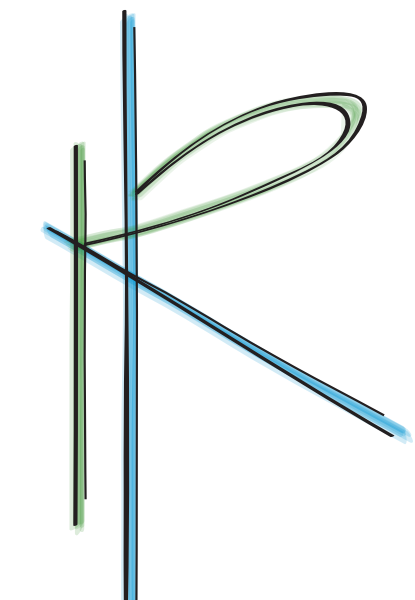
GENERAL NOTES

- ALL PLANS AND DIMENSIONS MUST BE REVIEWED BY CONTRACTOR BEFORE CONSTRUCTION AND MUST VERIFY ANY DISCREPANCIES BETWEEN THE DRAWING AND EXISTING CONDITIONS PRIOR TO WORK BEING DONE.
- CONTRACTOR MUST COMPLY WITH ALL CURRENT BUILDING CODES, BY-LAWS AND REGULATIONS.
- THESE PLANS ARE FOR A SINGLE PROJECT AND THE COPYRIGHT BELONGS TO UPRISE DESIGN + DRAFTING INC. THE DESIGN MUST NOT BE COPIED AND THESE DRAWINGS MUST NOT BE DUPLICATED BY ANY PERSONS.

REVISIONS

#	DATE	DESCRIPTION
4	12/21/2016	REVISED WINDOWS
3	12/21/2016	O 2 EBF + REVISED WINDOW
2	12/19/2016	ROOF - SOLAR LOCATION ADDED
1	10/26/2016	ISSUED FOR BUILDING PERMIT

BASEMENT PLAN



WALL ASSEMBLIES

E1	TYPICAL EXTERIOR WALL CLADDING WEATHER BARRIER 3/8" SHEATHING 2x6 STUD WALL BATT INSULATION VAPOUR BARRIER 1/2" GYPSUM BOARD
E1A	TALL EXTERIOR WALL (>11'-8") CLADDING WEATHER BARRIER 3/8" SHEATHING 2x6 STUD WALL BATT INSULATION VAPOUR BARRIER 1/2" GYPSUM BOARD
E2	FROST WALL DAMP PROOFING 9" CONCRETE WALL 1" AIR SPACE 2x4 STUD WALL BATT INSULATION VAPOUR BARRIER 1/2" GYPSUM BOARD
E3	GARAGE WALL 1/2" GYPSUM 2x6 STUD WALL BATT INSULATION AIR/VAPOUR BARRIER 1/2" GYPSUM
E4	STONE COLUMN FEATURE VENEER STONE WEATHER BARRIER 3/8" SHEATHING 2x4 STUD WALL
P1	TYPICAL INTERIOR WALL 1/2" GYPSUM BOARD 2x4 STUD WALL 1/2" GYPSUM BOARD
P2	2X6 WALL 1/2" GYPSUM BOARD 2x6 STUD WALL 1/2" GYPSUM BOARD
P3	LOAD BEARING INTERIOR WALL 1/2" GYPSUM BOARD 2x6 STUD WALL 1/2" GYPSUM BOARD
P3A	TALL LOAD BEARING INTERIOR WALL (>11'-8") 1/2" GYPSUM BOARD 2x6 STUD WALL 1/2" GYPSUM BOARD

LOT 5 CRAWFORD POINT
RICHMOND HOMES
 DATE: DECEMBER 21, 2016
 SCALE: AS NOTED

GENERAL NOTES

- ALL PLANS AND DIMENSIONS MUST BE REVIEWED BY CONTRACTOR BEFORE CONSTRUCTION AND MUST VERIFY ANY DISCREPANCIES BETWEEN THE DRAWING AND EXISTING CONDITIONS PRIOR TO WORK BEING DONE.
- CONTRACTOR MUST COMPLY WITH ALL CURRENT BUILDING CODES, BY-LAWS AND REGULATIONS.
- THESE PLANS ARE FOR A SINGLE PROJECT AND THE COPYRIGHT BELONGS TO UPRISE DESIGN + DRAFTING INC. THE DESIGN MUST NOT BE COPIED AND THESE DRAWINGS MUST NOT BE DUPLICATED BY ANY PERSONS.

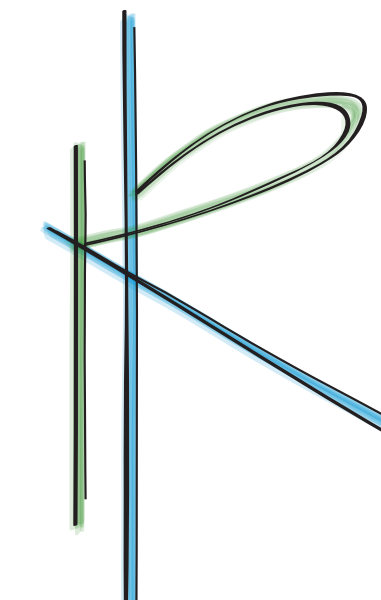
REVISIONS

#	DATE	DESCRIPTION
4	12/21/2016	REVISED WINDOWS
3	12/21/2016	0.2 EBF + REVISED WINDOW
2	12/19/2016	ROOF - SOLAR LOCATION ADDED
1	10/26/2016	ISSUED FOR BUILDING PERMIT

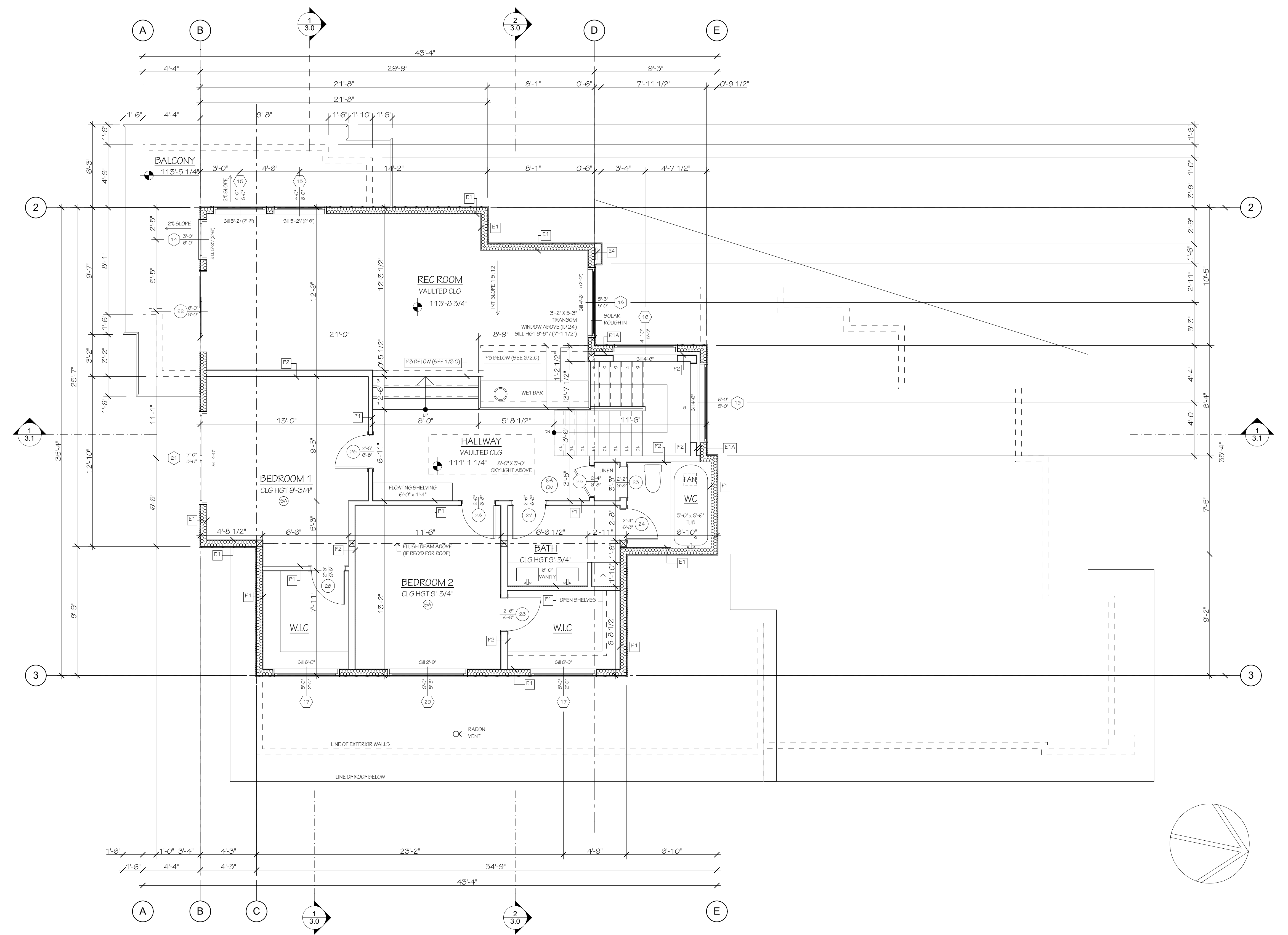
1 MAIN FLOOR PLAN
 SCALE: 1/4" = 1'-0"

MAIN FLOOR: 1814.85 SQFT
 GARAGE: 568.69 SQFT

MAIN FLOOR PLAN



UPRISE DESIGN + DRAFTING INC.
1685 TRAVERTINE DR., LAKE COUNTRY, BC
PH: 778.480.0341



WALL ASSEMBLIES	
E1	TYPICAL EXTERIOR WALL CLADDING WEATHER BARRIER 3/8" SHEATHING 2x6 STUD WALL BATT INSULATION VAPOUR/AIR BARRIER 1/2" GYPSUM BOARD
E1A	TALL EXTERIOR WALL (>11'-8") CLADDING WEATHER BARRIER 3/8" SHEATHING 2x6 STUD WALL BATT INSULATION VAPOUR/AIR BARRIER 1/2" GYPSUM BOARD
E2	FROST WALL DAMP PROOFING 9" CONCRETE WALL 1" AIR SPACE 2x6 STUD WALL BATT INSULATION VAPOUR/AIR BARRIER 1/2" GYPSUM BOARD
E3	GARAGE WALL 1/2" GYPSUM 2x6 STUD WALL BATT INSULATION AIR/VAPOUR BARRIER 1/2" GYPSUM
E4	STONE COLUMN FEATURE WEATHERSTONE WEATHER BARRIER 3/8" SHEATHING 2x4 STUD WALL
P1	TYPICAL INTERIOR WALL 1/2" GYPSUM BOARD 2x4 STUD WALL 1/2" GYPSUM BOARD
P2	2X6 WALL 1/2" GYPSUM BOARD 2x6 STUD WALL 1/2" GYPSUM BOARD
P3	LOAD BEARING INTERIOR WALL 1/2" GYPSUM BOARD 2x6 STUD WALL 1/2" GYPSUM BOARD
P3A	TALL LOAD BEARING INTERIOR WALL (>11'-8") 1/2" GYPSUM BOARD 2x6 STUD WALL 1/2" GYPSUM BOARD

LOT 5 CRAWFORD POINT
RICHMOND HOMES
DATE: DECEMBER 21, 2016
SCALE: AS NOTED

GENERAL NOTES
1. ALL PLANS AND DIMENSIONS MUST BE REVIEWED BY CONTRACTOR BEFORE CONSTRUCTION AND MUST VERIFY ANY DISCREPANCIES BETWEEN THE DRAWING AND EXISTING CONDITIONS PRIOR TO WORK BEING DONE.
2. CONTRACTOR MUST COMPLY WITH ALL CURRENT BUILDING CODES, BY-LAWS AND REGULATIONS.
3. THESE PLANS ARE FOR A SINGLE PROJECT AND THE COPYRIGHT BELONGS TO UPRISE DESIGN + DRAFTING INC. THE DESIGN MUST NOT BE COPIED AND THESE DRAWINGS MUST NOT BE DUPLICATED BY ANY PERSONS.

REVISIONS		
#	DATE	DESCRIPTION
4	12/21/2016	REVISED WINDOWS
3	12/21/2016	O.2 EBF + REVISED WINDOW
2	12/19/2016	ROOF - SOLAR LOCATION ADDED
1	10/26/2016	ISSUED FOR BUILDING PERMIT

1 UPPER FLOOR PLAN
SCALE: 1/4" = 1'-0"

UPPER FLOOR: 1147.53 SQFT
BALCONY: 176.50 SQFT

UPPER FLOOR PLAN